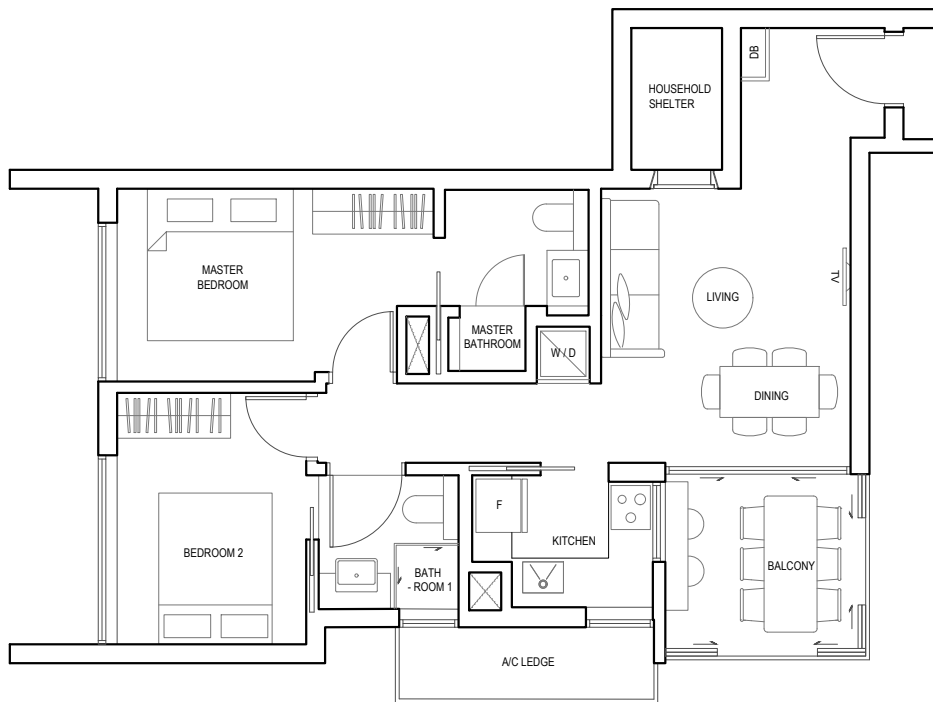


2 BEDROOM TYPE A1

73 SQM (786 SQFT)
UNIT 02-01, 03-01, 04-01

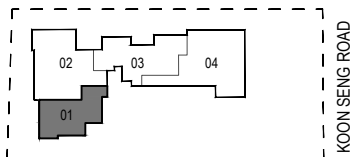


LEGEND:

- A/C - Air Conditioning
- DB - Distribution Board
- F - Fridge
- W/D - Washer cum Dryer
- ⊠ - Services void space Not part of strata area



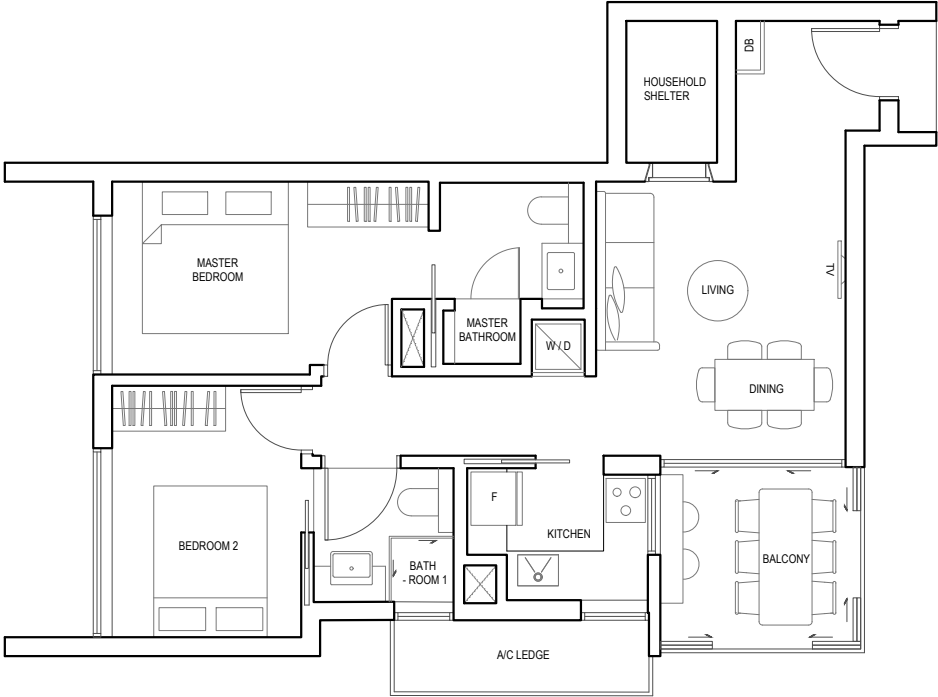
All floor area include a/c ledge and balcony.
Balconies are not to be enclosed except with a balcony screen which has been approved and complies with the Competent Authority's guidelines. For an illustration of the approved balcony screen, please refer to diagram annexed hereto as "Annexure A"



KEY PLAN: 2ND TO 4TH STOREY
not to scale

2 BEDROOM TYPE A1-A

73 SQM (786 SQFT)
UNIT 05-01

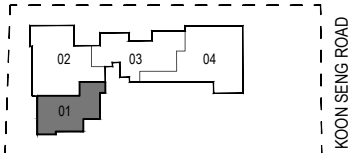


LEGEND:

- A/C - Air Conditioning
- DB - Distribution Board
- F - Fridge
- W/D - Washer cum Dryer
- ⊠ - Services void space
- ⊠ - Not part of strata area



All floor area include a/c ledge and balcony.
Balconies are not to be enclosed except with a balcony screen which has been approved and complies with the Competent Authority's guidelines. For an illustration of the approved balcony screen, please refer to diagram annexed hereto as "Annexure A"



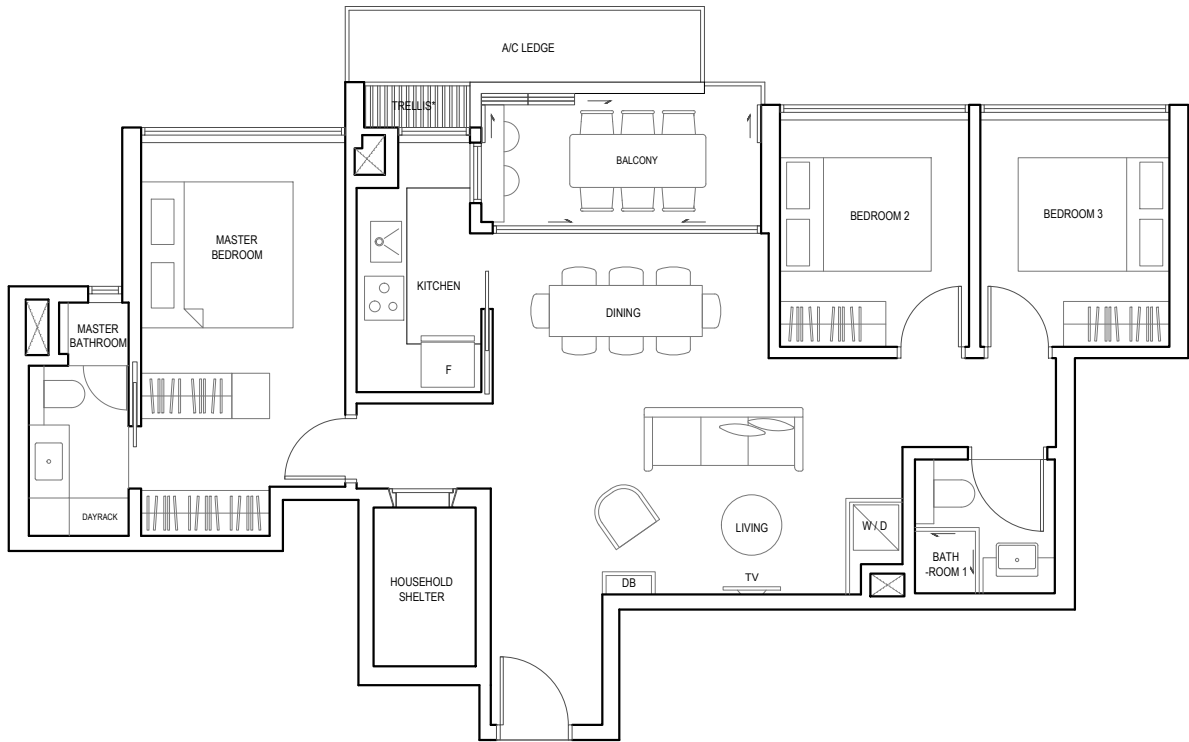
⊘ KEY PLAN: 5TH STOREY
not to scale



3 BEDROOM TYPE B1

96 SQM (1033 SQFT)

UNIT 02-03, 03-03, 04-03, 05-03



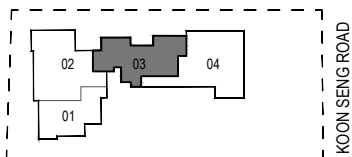
LEGEND:

- A/C - Air Conditioning
- DB - Distribution Board
- F - Fridge
- W/D - Washer cum Dryer
- X - Services void space
Not part of strata area
- TRELLIS* - Not part of strata area



All floor area include a/c ledge and balcony.

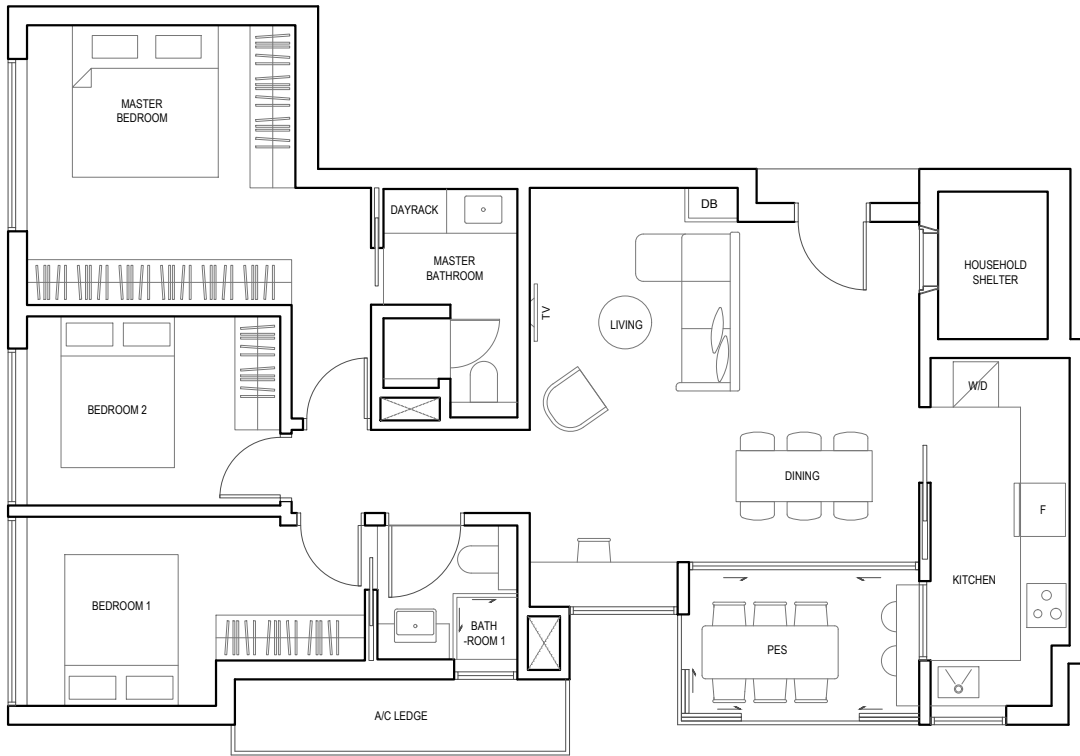
Balconies are not to be enclosed except with a balcony screen which has been approved and complies with the Competent Authority's guidelines. For an illustration of the approved balcony screen, please refer to diagram annexed hereto as "Annexure A"



KEY PLAN: 2ND TO 5TH STOREY
not to scale

3 BEDROOM TYPE B2

108 SQM (1163 SQFT)
UNIT 01-01



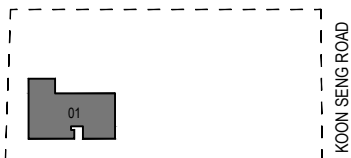
LEGEND:

- A/C - Air Conditioning
- DB - Distribution Board
- F - Fridge
- W/D - Washer cum Dryer
- Services void space
Not part of strata area



All floor area include a/c ledge and balcony.

Balconies are not to be enclosed except with a balcony screen which has been approved and complies with the Competent Authority's guidelines. For an illustration of the approved balcony screen, please refer to diagram annexed hereto as "Annexure A"



KEY PLAN: 1ST STOREY
not to scale

4 BEDROOM TYPE C1

113 SQM (1216 SQFT)

UNIT 02-02, 03-02, 04-02, 05-02



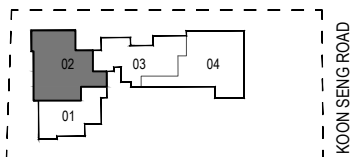
LEGEND:

- A/C - Air Conditioning
- DB - Distribution Board
- F - Fridge
- W/D - Washer cum Dryer
- Services void space Not part of strata area



All floor area include a/c ledge and balcony.

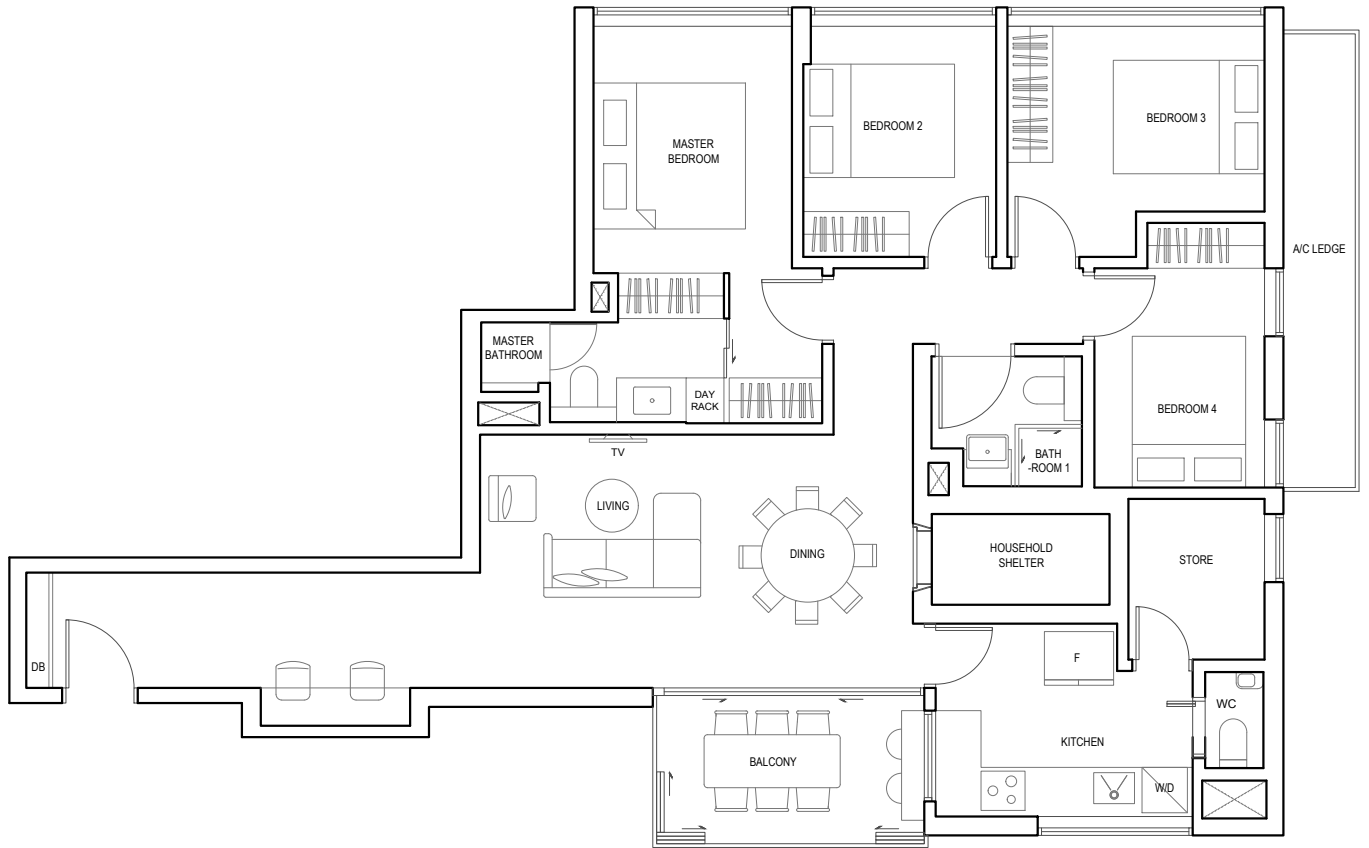
Balconies are not to be enclosed except with a balcony screen which has been approved and complies with the Competent Authority's guidelines. For an illustration of the approved balcony screen, please refer to diagram annexed hereto as "Annexure A"



KEY PLAN: 2ND TO 5TH STOREY
not to scale

4 BEDROOM TYPE C2

122 SQM (1313 SQFT)
UNIT 02-04, 03-04, 04-04

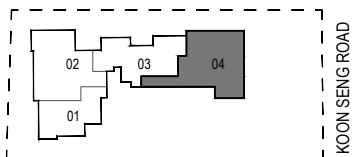


LEGEND:

- A/C - Air Conditioning
- DB - Distribution Board
- F - Fridge
- W/D - Washer cum Dryer
- Services void space
Not part of strata area



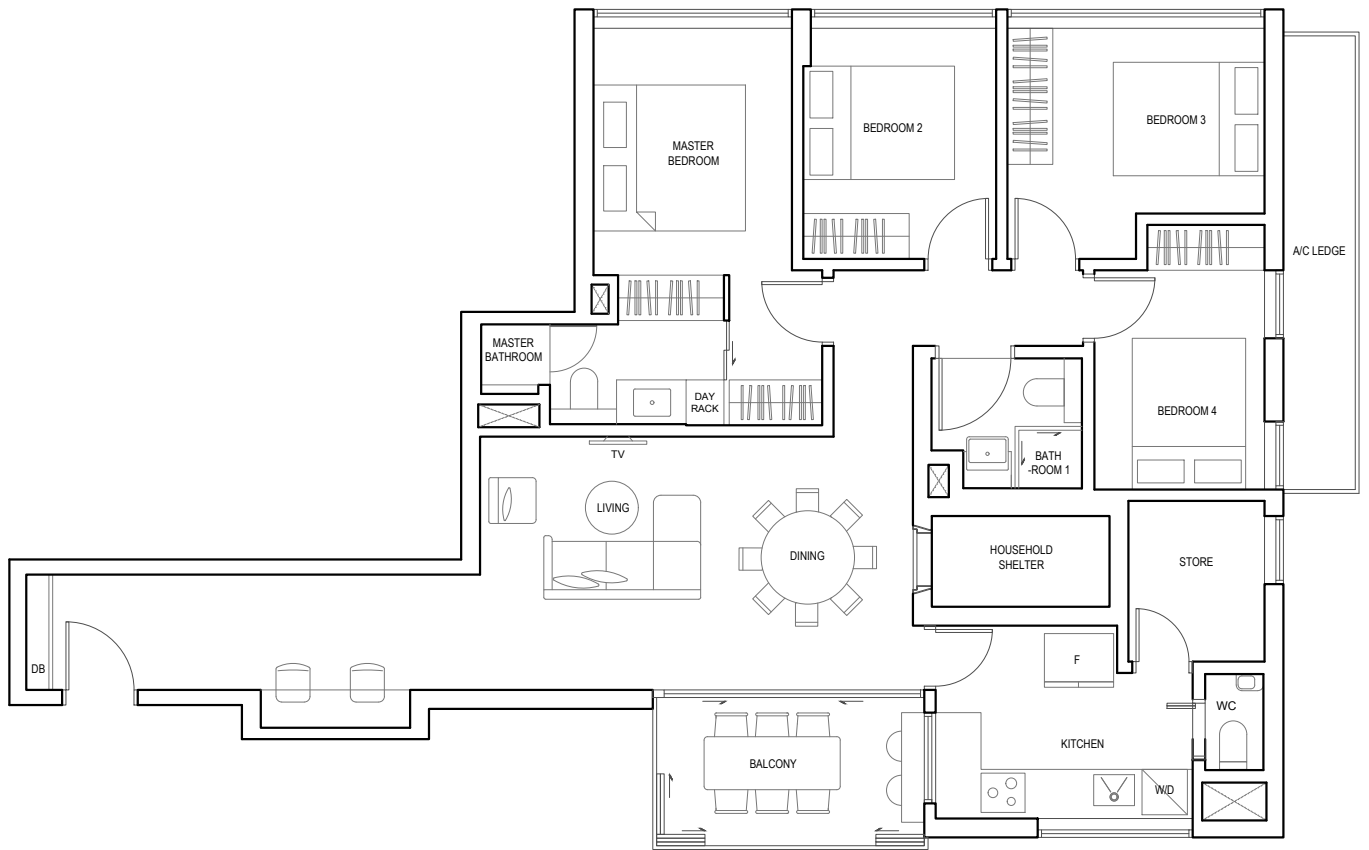
All floor area include a/c ledge and balcony.
Balconies are not to be enclosed except with a balcony screen which has been approved and complies with the Competent Authority's guidelines. For an illustration of the approved balcony screen, please refer to diagram annexed hereto as "Annexure A"



KEY PLAN: 2ND TO 4TH STOREY
not to scale

4 BEDROOM TYPE C2-A

122 SQM (1313 SQFT)
UNIT 05-04

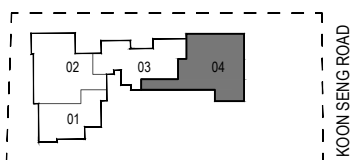


LEGEND:

- A/C - Air Conditioning
- DB - Distribution Board
- F - Fridge
- W/D - Washer cum Dryer
- ⊠ - Services void space
Not part of strata area



All floor area include a/c ledge and balcony.
Balconies are not to be enclosed except with a balcony screen which has been approved and complies with the Competent Authority's guidelines. For an illustration of the approved balcony screen, please refer to diagram annexed hereto as "Annexure A"



KEY PLAN: 5TH STOREY
not to scale